

**PUPPETS
VENTRILOQUIAL
PUNCH AND JUDY
AND
MARIONETTES**

by

FRANK MARSHALL



¶ Today *Marshall Hand Carved Wood Figures* stand apart from the ordinary and have become a Standard. They are acclaimed throughout the Entertainment World as leaders in quality and craftsmanship. Why?

¶ The pride of achievement is the incentive for making *Marshall Figures* the Acme of Perfection.

¶ This catalogue with its descriptions and illustrations will serve as a ready reference and will assist you in ordering approved *Marshall Figures*.

Frank Marshall

TALKING FIGURES

History by PAUL MCPHARLIN

WE may pass a man in the street every day without looking at him. But if somebody points him out to us as a descendant of a Mayflower settler, or of one of the early presidents of the United States, we may observe him sharply, and see quite a bit in him. So it is with those wooden figures, the puppets in a Punch and Judy show, or on the knee of a ventriloquist. We take them very much for granted. Who invented them? Somebody who lived in Plymouth, Massachusetts, about 1620? No! for they existed long before that. Dates and places are difficult to fix, puppets were first conceived so long ago.

The primitive man who hit upon the trick of speaking by emitting air from his lungs slowly through the glottis, without perceptible movement of his lips or jaws, may well have mystified his companions. They were ready to believe that a tree, or a rock, or any other strange object nearby, was causing the words. The ventriloquist (from the Latin *venter*, belly, and *loqui*, past participle of the verb, to speak), with his magic power, became identified with spirits and demons, a creator of awe among his fellow mortals. When he set up as priest, intermediary between man and spirits, he used his ventriloquial skill in causing images of these spirits to speak. The images he might make with moving heads and lips—the first puppets—so that the words might all the more seem to issue from their throats.

We have records that such images were used in ancient Egypt and Greece at least four centuries before the Christian era. They belonged in the temples, however; they fascinated because they spoke prophecies and divine judgments.

A century or two later, string-puppets (more of the kind we know) and shadow-puppets of the translucent parchment, in human form, came to be used in Greece and China respectively. At first considered supernatural when they spoke, these little figures in time began to be considered less seriously, as they learned to joke and perform antics and be human. They sang and danced, with short memory of their magic origin. The two basic types of puppets, the shadow from China and the string, or hand-operated figures from Greece, began to travel also. The first came west, and arrived in Europe in the eighteenth century as Chinese Shadows. The second went eastward, and got to China and Japan somewhat sooner, for they have been known in these countries, and even in Alaska (which is thought to have been settled by Asiatics) for centuries.

When puppets became dramatic performers, and their operator was hidden behind his miniature stage, he had no need of ventriloquism; but the ancient art was preserved by the manipulator who made no use of scene or stage, and who conversed with the lay-figure seated before him.

In the dark church of the middle ages, moving perhaps only as the flickering candles caught the gold embroideries of their garment, stood little figures to portray scenes from biblical lore. In the center would be the sweet heroine, Mary—who gives her name to marionettes.

So when next you see Punch and Judy, or the ventriloquist's smart boy, chattering thoughtlessly away, look closely, and you may be able to detect a trace of those dim ancestors who filled with awe the worshipper by the Nile, or the Emperor in his Asiatic palace, or the medieval pilgrim.

As in the past, so today, figures are used for entertaining. The modern figure is very much different from those used in the past. Figures today must be natural in appearance and mechanically perfect.

Marshall figures incorporate these features and for years have been the standard and used by all leading professionals.

A Few of the Leading Professionals

Using Our Figures

Ben Badley	Jerry Gould	Fred Russell
Edgar Bergen	Ed Grant	Alf Rippon
Omar Bey	Dr. Gentely	Philep Reye
Leo Bill	Prof. Holland	Lester Rizek
Robert Brooking	J. H. Heany	Adam Ross
Chicago Civic Opera Co.	Jack King	Harry Rose
Lucelle Elmore	Great Lester	Kenneth Spencer
Hugh Emmet	Grant Livermore	Al Silver
Everett & Quigley	Lorraine	W. T. Schorb
Wm. Ebbs	S. LeCourt	E. Steward
Lillian Faulkner	Lamb's Marionettes	Ed Tenny
Harry Ferris	Morgan and Lake	Max Terhune
Ned Fraily	Morin and Gale	Don Taylor
Frank Gaby	Judson Marshall	Ray Turner
Doc George	P. J. Moloney	Charle Ulrick
Lon Chaney	Silent Mora	Vox and Walter
Ray Conlin	Les Nichols	Walter Walters
D. B. Coleman	Bob Neller	W. Winter
McCormick and Wallace	Hall Parr	George F. Wilson
Ray and Ann Raymond	Jack Poole	Vernon
Leon Toone and Leona	Parish and Peru	Len Vintus
Trovolo	Stanley Philps	Dave Rafael
Harry and Mildred Otto	W. "Bill" Zeilner	

Herr Louie the Weasel and his Hungry Five Band

CONSTRUCTION OF VENTRILOQUIAL FIGURES

Ventriloquial heads are hand-carved of light weight wood, hollowed out and made in two sections; arranged so as to easily taken apart. This feature facilitates adding various effects whenever desired.

Mechanical Movements

The most important requirements of the figure are the mechanical movements of the head and mouth. This assures success to the performer and his act. Fulllest confidence in the proper response of the manipulation of the figure is necessary.

The lower jaw or mouth is so constructed that it moves in its own groove. This eliminates the unnatural sinking in effect so common when kid leather is used. The *Marshall Ventriloquial Movable Mouth* is not a leather movement. This is a valuable asset for close work such as club and drawing room entertainment.

Mouth opens real wide, and jaw movement is effective and can be seen from any part of the theatre.

Controls

Mouth is controlled by lever or ring. (When ordering please state which control is desired.) The cords that control mouth movement, as well as other effects, runs through the rod and not along side of it.

Head is attached to a wood rod and can be turned in any direction desired. Illustration No. V21 shows natural facial expression of the face when mouth is open. There is no distortion. This is one of the many features why all leading professionals use and indorse the *Marshall Figures*.

Bodies, arms and legs are naturally shaped and proportioned.

Hands are carved of wood, well done, and painted in natural colors.

Facial Effects and Paints

Each head is individually carved as to character and painted (Lester formula) in natural colors to bring out every detail of that character. Nothing is overlooked. When completed the effect is life-like and real. Not just a block of wood.

Lester Formula is an oil paint that does not have that shiny reflection so annoying to an audience. Can be washed whenever soiled without injury to finish.

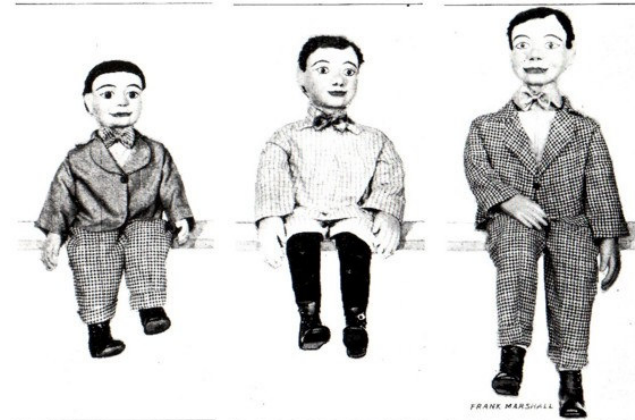
Wigs

Crepe hair (very natural in appearance) wigs are used and can be supplied in any color desired.

Natural hair wigs made in any style or color.

Individual Requirements and Ideas

We will gladly co-operate with you in developing your ideas as to special characters and effects best suited for your individual needs. We are equipped mechanically and artistically to do this for you. Just forward your sketch or write your idea as plain as possible and we will do the rest. Your plans, sketches and ideas will be kept strictly confidential.



Illustrated above are three standard size knee ventriloquial figures.

No. V1—"Wee Willy"—The smallest of the knee figures, measures 30 inches in height. This ventriloquial figure is especially designed for the young fellow. Complete with movable mouth, turning head, wig, costumed in cloth suit as illustrated.

No. V2—Same as No. V1 only costumed in plain suit.

No. V3—"Fresh Kid"—This size figure is best adapted for the drawing room entertainer. Height of figure 36 inches. Complete with movable mouth, turning head, wig, costumed in plain suit as illustrated. (When plain suit is specified style is the same as illustrated on figure No. V3.)

No. V4—"Fresh Kid"—(PS)—This size is used in theatres and large halls. Height 42 inches. Complete with movable mouth, turning head, wig, costumed in cloth suit as illustrated.

No. V5—Same as No. V4 only costumed in plain suit.

NOTE—All figures marked (PS) are professional size figures and measure 42 inches in height.



No. V6—"Nosey"—(PS)—A smart effect character that will "click" with any audience. Complete with movable mouth, turning head, wig, and costumed in blue serge suit as illustrated.

No. V7—Same as No. V6 only costumed in Bell Boy uniform.

No. V8—Same as No. V6 only costumed in plain suit.

No. V9—"Mickey" (PS)—Irish character. Complete with movable mouth, turning head, wig, costumed in cloth suit as illustrated.

No. V10—Same as No. V9 only costumed in plain suit.

No. V11—Same as No. V9 only in the 36-inch size and costumed in plain suit.



No. V12—"Girl"—(P S)—Attractive and well featured, movable mouth, turning head, wig of natural hair, neatly dressed as illustrated.

No. V13—"Tuffy"—(PS)—A tough yet comical expression that will appeal to everyone. Large ears, movable mouth, turning head, wig, costumed in sweater, long trousers, derby as illustrated.





No. V14—"Sambo" (PS)

—A real negro character with those beady eyes, flat nose, large lips, movable mouth, kinky hair wig, turning head, costumed in loud colored suit as illustrated.

No. V15—Same as No. V14 only costumed in Plantation style.

No. V16—Same as No. V14 only costumed in plain suit.

No. V17—Same as No. V14 but in the 36-inch size and costumed in plain suit.

No. V18—"Sailor" (PS)—

A typical character of a sailor. Complete with movable mouth, turning head, wig, costumed in neat sailor suit as illustrated.

No. V19—Same as No. V18 but in "bare foot" style; feet are naturally carved of wood and painted in natural color.

No. V20—Same as No. V18 only costumed in plain suit.



No. V21—"Saucy Kid" (PS)—

—Snappy character of young boy. Complete with movable mouth, turning head, wig, costumed in neat suit as illustrated.

No. V22—"Girl"—A very pleasant figure of a girl. The facial effect is somewhat saucy which helps get more laughs. Complete with movable mouth, turning head, natural hair wig, well dressed as illustrated. This figure is 38 inches high.





A Tribute From The Great Lester

Our ventriloquist department is under the direction of Mr. Lester which means double assurance for your every ventriloquist need.

Appointments for professional instructions in the art of ventriloquism are available. For further information write this office.

Through the courtesy of Mr. Lester we are authorized to furnish genuine replica of his world-renowned ventriloquist character—which is illustrated on this page. **No. V23.**

Beginner's Ventriloquist Outfit

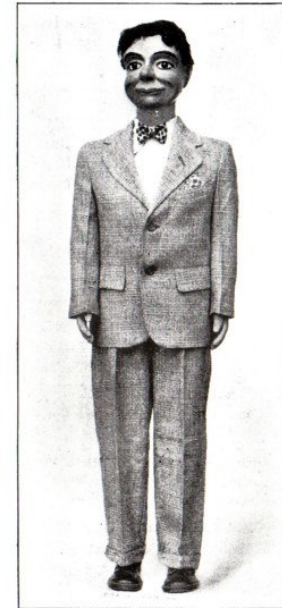
Positively the most original method ever offered to the ventriloquist student. Outfit consists of a special practice ventriloquist figure.

Illustrated instructions that teach every angle of the art.

This new method is highly indorsed by the entire profession.

Further details and particulars forwarded on request.

No. WV24—Walking Ventriloquist Figures are a sensation. **Marshall Walking Figures** are the most natural in action and appearance. They are practical and built portable. Packs into small carrying case. Figure walks by simply catching his hand and walking along with it. When figure is walking mouth is manipulated by special control from the figure's hand. This permits conversation between performer and figure while walking. All movements are controlled from inside of body when not walking. Complete with movable mouth, turning head, wig, costumed in neat suit as illustrated and packed in fiber carrying case.



No. PV25—"Pocket Figure"

A ventriloquist figure small enough to carry in your pocket, yet made like the regular professional ventriloquist figure. Complete with movable mouth, turning head, wig, costumed as illustrated.



VH26 VH27 VH28 VH29 VH30

Ventriloquist Heads

Heads for Ventriloquist figures complete with movable mouth, wig, wood rod, painted in natural colors. Ready to fit into body.

No. VH26—Professional size head. No. VH27—Professional size head. No. VH28—Same as used on our 36-inch size figure. No. VH29—Same as used on our 30-inch size figure. No. VH30—Same as used on our 36-inch size figure.

Heads from any figure illustrated in catalogue can be procured. Also many other characters. Write us about your needs.

No. V31—Not illustrated. Old Man and Old Lady Figures.



Hands for ventriloquist figures. Carved of wood same as illustrated. Painted in natural colors.

No. H32—For life size figure.

No. H33—For professional size figure. No. H34—For 36-inch size figure. No. V35—For 30-inch size figure.

Talking Hands

NO.TH36 ILLUSTRATION ON PAGE 20

Install One or More of These Laugh Getting Extra Effects

It will repay you many times in bigger and better laughs.

Extra effects described and listed below can be installed in any ventriloquist head we make. Every effect is natural in appearance and mechanically perfect.

- No. X37—WINKING EYELIDS. Eyelids close over outside of eye.
- No. X38—WINKING EYEBALLS. Eyeballs turn on inside of head.
- No. X39—COCKEYES. Both eyes roll into center for very funny effect.
- No. X40—ROLLING EYES. Eyes roll from center to corner of eye sockets.
- No. X41—ROLLING EYES WITH ONE WINKING EYE (in same head).

When one winking eye or eyelid is wanted state which eye. Also direction of roll.

- No. X42—RAISING EYEBROWS. Both eyebrows raise for a very comical effect.
- No. X43—SMOKING EFFECT FOR CIGARETTE.
- No. X44—SMOKING EFFECT FOR PIPE OR CIGAR. Please state which.
- No. X45—CRYING EFFECT. In this effect figure cries water from corner eye ducts.
- No. X46—SPITTING EFFECT. Figure spits wide spray of water from mouth.
- No. X47—LAUGHING EFFECT. The upper lip raises into a smile showing a row of pearly white teeth in life fashion.
- No. X48—PORCELAIN TEETH, upper and lower.
- No. X49—PUCKERING LIPS. If your figure whistles this is the effect you have been waiting for. Both upper and lower lips form a pucker which is what you need for that perfect effect. (Does not interfere with movement of mouth.)
- No. X50—FLAPPING EARS. Very comical. Both ears.
- No. X51—LUMINOUS NOSE. Nose lights up when desired.
- No. X52—TONGUE. Tongue projects several inches out of mouth.
- No. X53—CROSSING KNEE. For knee figure only.
- No. X54—SALUTING ARM. Arm raises for a salute.
- No. X55—FRIGHT WIG ATTACHMENT. Wig raises as when frightened. Crepe hair.
- No. X56—FRIGHT WIG ATTACHMENT. Natural hair.
- No. X57—PNEUMATIC MOUTH CONTROL FOR DISTANCE WORK. With this control the mouth of a ventriloquist figure can be manipulated up to a distance of 25 feet. Reliable and practical. Installed complete in new head with six feet of tubing.
- No. X58—TUBING FOR PNEUMATIC MOUTH CONTROL.
- No. X59—COLOR CHANGING NECKTIE. Tie changes color when desired.
- No. X60—COLOR CHANGING HANDKERCHIEF. In this effect handkerchief in his breast pocket of coat or shirt. Same changes color when desired.

No. G61—DRINKING GLASS. Do you do the Drinking Trick? If so here is the finest glass made to help you do it better. A full size glass that holds only about one ounce of liquid.

- No. VD62—Dialogue for ventriloquist and boy figure.
- No. VD63—Dialogue for ventriloquist and boy figure.
- No. VD64—Dialogue for ventriloquist and boy figure.
- No. VD65—Dialogue for ventriloquist and boy figure.
- No. VD66—Dialogue for ventriloquist and girl figure.
- No. VD67—Dialogue for ventriloquist and colored boy figure.
- No. VD68—Dialogue for ventriloquist and boy and girl figures.

We Also Write Special Material

Carrying cases well made of fiber.

- No. CC69—For professional knee figure.
- No. CC70—For 36-inch size knee figure.
- No. CC71—For 30-inch size knee figure.

Other sizes made to order.

- No. PK72—PAINT KIT. For those who wish to repaint their own puppets and figures. Kit complete with flesh, red, black and white colored paint and set of three brushes.

COSTUMES AND UNIFORMS MADE TO ORDER. JEWELRY, NOVELTIES, ETC.

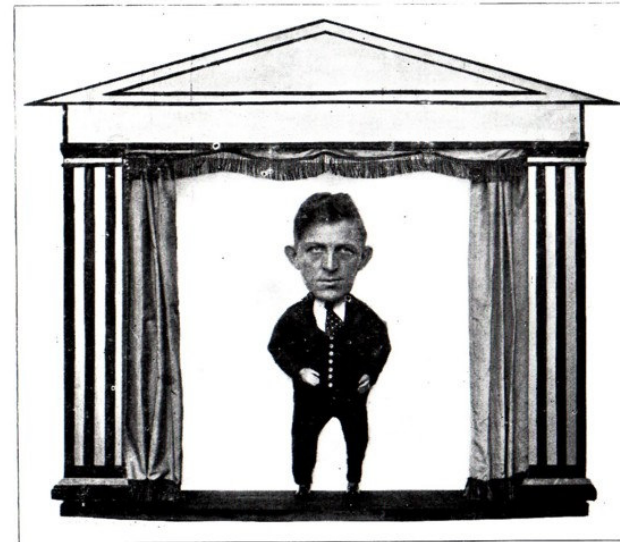
- No. L73—LITHOGRAPH POSTERS. It pays to advertise. We offer one of the finest lithographed posters for the ventriloquist. Size 21 x 28 inches. Beautifully illustrated in colors with ventriloquist sitting at table with figure on his knee. Space on top of poster for your name and ad.

Chair and table covers in many varieties.

Monograms made to your special order.

Repair and Service Department

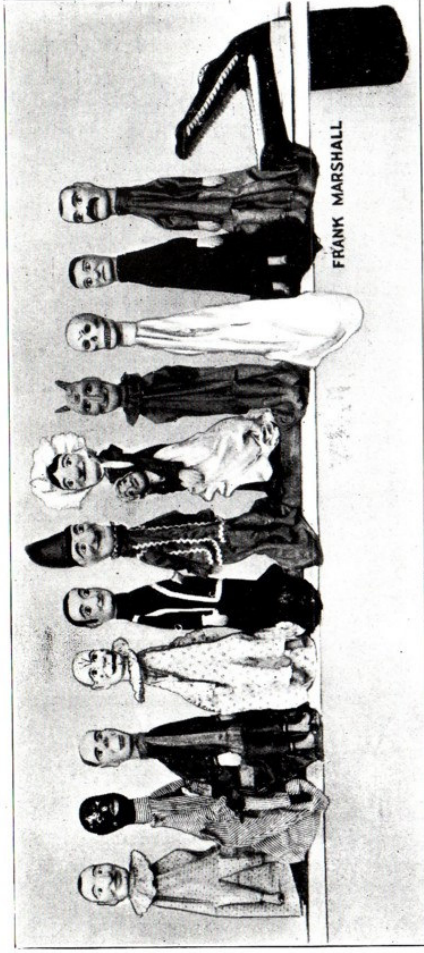
Our repair and service department is always at your service. If your ventriloquist, Punch and Judy, marionette or any other figure is in need of repairs or repaint forward them to us and we will serve you to your complete satisfaction. Prices are always reasonable. Work is guaranteed.



Living Marionette Shows

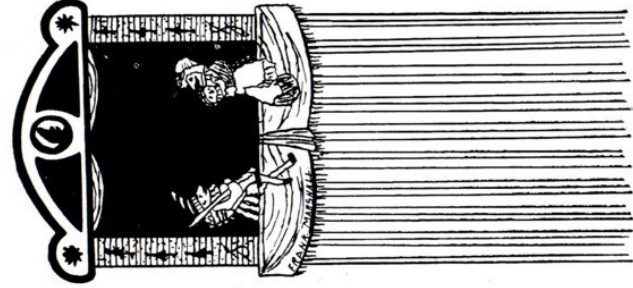
No LM74—This show consists of a very beautiful theatre or stage. Performer stands back of a curtain; only his head protrudes through a slot in the back curtain from which a miniature figure is suspended. His face is made up to represent the character he wishes to portray. The small figure is made so that the performer can move the arms and legs in the most life-like manner while he sings or talks or dances. The effect is most grotesque and causes roars of laughter. Several characters can be represented in rotation according to the number of figures used. Or two performers with different characters can put on a little skit. Complete show as illustrated, two characters, dialogue and instructions. Portable, very light and sets up in a few minutes. Packed in fiber carrying case.

Characters to select from: Boy, Girl, Scotchman, Negro, Old Lady, Old Man.



Illustrated are professional Punch and Judy figures. Height of head about six inches. Characters, reading from left to right:
 No. P75—Hebrew. No. P76—Negro. No. P77—Irish. No. P78—Clown. No. P79—Doctor. No. P80—Punch.
 No. P81—Judy. No. P82—Punch Baby. No. P83—Devil. No. P84—Ghost. No. P85—Hangman. No. P86—Sheriff.
 No. 87—Alligator. Not illustrated: No. P88—Prize Fighters (set of two). No. P89—Undertaker.
 Our Punch figures are natural looking and comical in appearance and create a good impression. The heads are carved of a solid block of light weight wood, painted in natural colors and costumed in fine materials. These figures are well made to give a lot of service and stand hard abuse.
 Below is the Punch Cabinet. Constructed to meet the demands of the professional Punch manipulator. The skeleton is built portable of a light weight wood. Set up in a few minutes. Height about 90 inches. Curtains are of fine material and very attractive patterns.

All the World Loves a Punch and Judy Show



- No. PO89—Outfit complete with 10 Punch characters costumed. Punch Cabinet and curtains, Silver Punch Reed, dialogue and packed in fiber carrying case.
- No. PO90—Outfit complete with 7 Punch characters costumed. Punch Cabinet and curtains, Silver Punch Reed, dialogue and packed in fiber carrying case.
- No. PO91—Outfit complete with 10 Punch characters costumed, Silver Punch Reed, dialogue.
- No. PO92—Outfit complete with 7 Punch characters, Silver Punch Reed and dialogue.
- No. PC93—Punch Cabinet and curtain complete.
- No. PC:4—Punch Cabinet skeleton only. (No curtain.)
 Individual figures costumed. See list.
- No. PD95—Punch and Judy dialogue with instructions and many tips.
 Individual figures not costumed. See list.

THE MARSHALL PUNCH AND JUDY REED IS THE FINEST TONE

QUALITY REED MADE.

- No. R96—Genuine Sterling Silver Punch and Judy Reed.
- No. R97—Gold Punch and Judy Reed in leather case.
 Resale Punch and Judy Reeds can be supplied in any number, also envelopes.

Punch and Judy Outfit for Children

No. PO98—This outfit consists of seven Punch and Judy characters: Punch, Judy, Devil, Policeman, Doctor, Baby, Alligator. Punch Cabinet and curtain, Silver Punch Reed and dialogue. This outfit is very light in weight and can be set up on any ordinary table. It is constructed just like the professional set.

Ventriloquial Punch and Judy Figures

An exclusive Marshall Feature. Punch figures with a movable mouth. The mouth is so arranged that it is manipulated with ease yet does not interfere with the movement of the figures. Practical, fool-proof. The next time you order include several of these ventriloquial Punch figures. You will be surprised and your audience delighted.



M99 M100 M101 M102 M103 M104

Illustrated are several complete professional marionettes costumed, height about 18 inches. Heads, bodies, legs and hands are carved of wood. Construction is of the flexible type and any desired movement is possible.

Marionettes are a specialty with us catering to the profession for many years. We are in a position to take care of your marionette needs; it matters not if you are a professional or an amateur. The quality, workmanship and service are the best.

For your special requirements we build to your specification. Complete productions built, stages, props, scenery, etc.

The following marionettes are complete with head, body, arms and hands, legs, but not costumed. Heads and hands are painted in natural colors.

- M99—M100—M101—M102—M103—M104
- M105—M106—M107—M108—M109—M110—M111
- M112—M113—M114—M115—M116—M117—M118
- M119—M120—M121—M122—M123—M124
- M125—M126—M127—M128

When ordering marionette heads give number of marionette and state head only.

No. MB129—Marionette bodies for 18-inch puppet complete without head.

No. MC132—Marionette control. Wood, airplane style.

No. MC133—Marionette control. Aluminum airplane style.

Costumes for Marionettes Made to Order



M105 M106 M107 M108 M109 M110 M111



M112 M113 M114 M115 M116 M117 M118



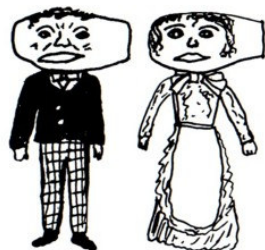
M119 M120 M121 M122 M123 M124



M125 M126 M127 M128

Talking Hands

No. TH36—Talking Hands. Anyone who is a ventriloquist or mimic can have loads of fun with these funny, grotesque figures. Can be had in the following characters: Boy, Girl, Old Man, Old Lady, Irish and Negro.



Puppet Plays edited by Paul McPharlin. (Typewritten producing directions may be rented for each play.)

TO THE PURCHASER

Write name and catalogue number of articles desired.

Remit by Post Office or Express Money Order or Certified Check.

When sending currency be sure to register letter.

C. O. D. orders must be accompanied by a deposit of one-half of the order.

Telegraph Orders—When ordering goods by telegram include deposit. This will avoid any unnecessary delay.

Terms are cash with order at net catalogue prices.

Shipments—Many items are shipped the same day order is received, but where extra or special effects are wanted time must be allowed for installing. We do not prepay any shipment.

Write or Print Your Name and Address Plainly. If on the road, give route ahead.



RICKIE TIK

Copyrighted and Registered

The Newest Ventriloquist Sensation

this PROFESSIONAL FIGURE

FOR BEGINNERS

MADE BY FRANK MARSHALL

MR. "DUMMY MAKER" HIMSELF

A Frank Marshall figure is as good
20 years from now as it is today.

Marshall figures are carved of wood, assembled so they can be repaired when necessary. This is very important for the young ventriloquist to know.

Buy a Marshall figure today . . . so you won't be disappointed tomorrow

Frank Marshall has spent a lifetime in this field making ventriloquist figures for these nationally known names who are all using Marshall figures: Edgar Bergen, Paul Winchell, Jimmy Nelson, Jay Jaxon, Bob McElroy, Clifford Guest, Bob King, Peter Rich, Bill Sweeney, Rosalee, Eddie Garson, Bud Vinson, Monsieur Brunard, and many others.

Here is your chance to get a professional figure at the price you can afford. For details and literature write —

FRANK MARSHALL

192 N. Clark Street

Chicago 1, Illinois